

**FY**  
**20**  
**22**

**Lycopodium**

**Annual General  
Meeting**

**Financial Year 2022**  
15 November 2022



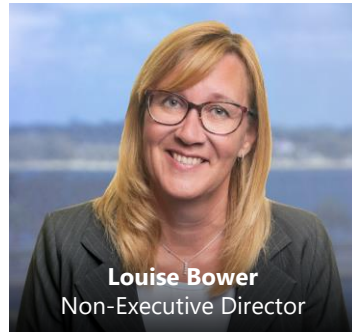
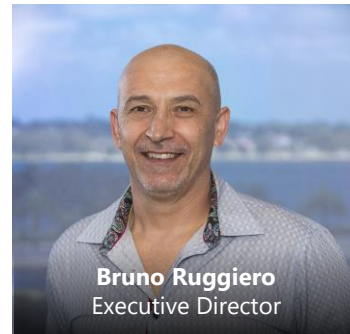
# About Lycopodium



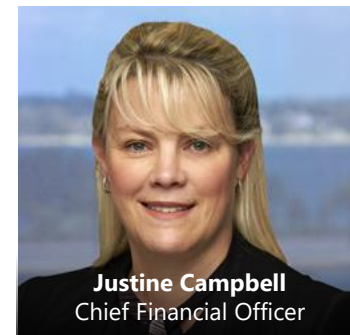
Lycopodium is an innovative and value-driven process, engineering and project delivery organisation.

The Company is headquartered in Perth, Western Australia and is listed on the Australian Stock Exchange.

# Corporate Overview



**ASX: LYL**



**Share Price**  
(as at 14.11.22)  
**\$6.78**

**Shares on Issue**  
**39.7m**

**Earnings per Share**  
FY2022  
**68.4 cents**

**Total Dividend**  
per Share  
FY2022  
**54 cents**

**Market**  
**Capitalisation**  
**~\$269m**

**Shareholder**  
**Breakdown**

Board & Management	39%
Institutions	26%
Retail	35%

We will continue to prioritise safety across our business and strive for continuous improvement

	FY2022	Current (rolling 12 months to October 2022)	Target
<b>Hours</b>	<b>3.2 million<sup>1</sup></b>	<b>4.4 million</b>	
LTIFR	0.3 <sup>2</sup>	0.2 <sup>2</sup>	0.0
TRIFR	1.6	2.3	≤2.8
EIFR	0.0	0.0	≤1.8

<sup>1</sup> Compared to 1.9 million manhours controlled in FY2021

<sup>2</sup> Against Construction Industry frequency rate of 8.5 (Safe Work Australia, *Key WHS Statistics Australia 2021*)



- With a number of significant projects mobilising to site this year, our manhours controlled have commensurately increased
- Safety management is focused on preventative measures – lead indicators rather than lag indicators
- Initiatives to support safe practices across our managed sites include a 'Back to Basics' campaign, reinforcing that all incidents are preventable if risk is understood and proactively managed



## Resources

- Gold and Precious Metals
- Base Metals
- Battery Metals
- Specialty Metals
- Diamonds and Gemstones
- Bulk Minerals
  - Iron Ore
  - Minerals Sands
  - Bauxite

## Infrastructure

- Railways
- Roads
- Non-Process Resource Infrastructure
- Asset Management

## Industrial Processes

- Pharmaceuticals
- Biotechnology
- Chemical and Energy
- Food and Beverage
- Manufacturing
- Research and Development
- Renewables

## Services

- Feasibility Studies
- Process Development and Optimisation
- Engineering and Design
- Project Management and Delivery
- Project Services
- Construction Management
- Commissioning and Operations Support
- Asset Management

# Highlights

FY2022



# FY2022 Financial Highlights

Revenue	EBITDA	Profit Before Tax
<b>\$232.2m</b>	<b>\$45.4m</b>	<b>\$38.9m</b>
NPAT	Cash at Bank <sup>1</sup>	Return on Equity
<b>\$27.2m</b>	<b>\$100.9m</b>	<b>29.0%</b>

- With a number of significant projects progressing to the on-site delivery phase and new work won during FY2022, the Company achieved a strong financial result for the year
- Revenue up 43% on FY2021 result
- Record Net Profit After Tax (NPAT)

<sup>1</sup> As at 30 June 2022

# FY2022 Balance Sheet

	FY2022	FY2021
	A\$'000	A\$'000
Current Assets	173.9	128.7
Total Assets	218.9	164.1
Total Liabilities	119.2	76.4
Equity	99.7	87.7

- Strong Balance Sheet provides capacity for investment
- Minimal debt
- Net Tangible Assets per Share – \$2.34



# Highlights

Current



# Current Operational Highlights – Resources

- Bomboré (Burkina Faso) – construction and commissioning completed
- Motheo (Botswana) – construction progressing well, with project completion anticipated end of Q1 2023; also commenced detailed engineering design works for the 5.2 Mtpa Motheo Expansion Project
- Navachab (Namibia) – due for completion early Q1 2023
- Séguéla (Côte d'Ivoire) – works on track for first gold pour mid-2023
- Ahafo North (Ghana) – onsite works now commenced
- Works continuing to schedule on a number of ongoing projects – Talison MSA and CGP3 (Western Australia), Tianqi LHP2 (Western Australia), Batu Hijau (Indonesia)
- A number of new projects now launched – Kathleen Valley (Western Australia), Goulamina (Mali), Sabodala-Massawa (Senegal), Lafigué (Côte d'Ivoire)
- Strong pipeline of studies



ADP in South Africa:

- Dry Mining Unit (Senegal) – commissioned on site at the Grande Côte mineral sands operation during Q3 2022
- Langer Heinrich Upgrade (Namibia) – works progressing to schedule
- Continuing to lead the delivery of specialised and bespoke modular plant into the southern African diamond market
- Strategic digital twinning and advanced process optimisation work with De Beers ongoing



# Current Operational Highlights – Infrastructure

- Continuing to provide design, engineering, technical advisory and Rail Infrastructure Management (RIM) services for greenfield and brownfield rail projects
- Supporting Australia's major passenger and freight rail system operators, including the Australian Rail Track Corporation (ARTC), New South Wales' Country Regional Network (CRN), Pacific National and Aurizon
- Recent award of the ARTC's Southern Highlands Overtaking Opportunities Detailed Design package, to improve the efficiency of freight and passenger services between Sydney and Melbourne
- Providing track and civil tender phase services, including tender design, for the Melbourne Airport AAP and Albury to Parkes Inland Rail tenders



- Increased opportunities in domestic manufacturing
- Providing design consultancy services to Commonwealth Serum Laboratories (CSL) for the development of base vaccine component production and plasma and blood facilities, including detailed engineering scope for CSL's world-class influenza vaccine manufacturing facility being built in Melbourne
- Long-standing partnership with Australia's Nuclear Science and Technology Organisation (ANSTO), providing ongoing services for the Australian Synchrotron – most recently awarded site construction and safety management services for the ADS/MX3 Beamline Shielding Enclosures
- Providing accelerated FEED and design consultancy services for Pilbara Minerals' Mid-Stream Project



## People

A number of initiatives have been developed over the past 12 months which are being rolled out during FY2023:

- Introduction of a global HR Information System (HRIS) to facilitate workplace efficiencies
- A new global Performance & Engagement platform to support a culture of continual performance feedback and engagement
- Inaugural Emerging Leaders Program (launched May 2022), focused on the development of the middle management levels within the business and therefore a key component of our succession planning strategy

## Knowledge Management

Significant investment has been made in our network and systems over the past year:

- Updates to our project collaboration software, ProjectWise, to support improved functionality
- Upgraded to Office 365, including the introduction of Teams and SharePoint, both very important tools for promoting collaboration across our global operations
- Researching and analysing options for a new enterprise resource planning (ERP) system that will support our Finance and Project Controls functions

## Dry Mining Unit

Development of the Dry Mining Unit, which was commissioned on site in Q3 2022 at the Grande Côte mineral sands operation in Senegal



## Digital Twin

Engineering the plant as a static digital twin supplemented by virtual reality technology, which then becomes the primary interface for operations and plant maintenance, and also facilitates extensive options analysis and scenario planning during the project study phases



## Orway IQ – MillROC

Online platform providing cloud-based, customised data analysis and dashboards for optimisation of mineral processing plants

The Yaouré Gold Mine in Côte d'Ivoire was the first project to be purpose-built 'MillROC ready'

## Future Battery Industries Cooperative Research Centre

Key participant in the FBICRC, supporting the development of capability to capture the significant opportunities associated with the energy transition for Australia from the growing global battery industry



## CSIRO

Working with the CSIRO to consider options and areas of research that could lead to a material reduction in the carbon footprint of the High Pressure Acid Leaching (HPAL) process for nickel laterite processing



## Renewable Energy

Participating in a range of battery storage research projects, including at the Fekola Gold Mine in Mali and the Sukari Gold Mine in Egypt

Undertaking a DFS for Lithium Australia for the production of lithium ferro phosphate battery pre-cursor material

Participating in hydrogen projects, including the Hydrogen Energy Supply Chain (HESC) project at the Port of Hastings in Victoria



# Our Community

We support the communities in which we live and work, via the Lycopodium Foundation:

- Long-term partnerships with the Murlpirrmarra Connection and the Clontarf Foundation in Australia, with both organisations supporting the education, self-esteem, life skills and employment prospects of young Aboriginal and Torres Strait Islander people
- In Africa, we have worked with BASICS International, an NGO in Ghana committed to protecting the basic human rights of children to education, shelter, food and safety, for many years, and most recently, partnered with The Pearl Safe Haven, an NGO also based in Ghana, which operates an emergency shelter for women and children
- LycoVent, the electrically operated ventilator designed and fabricated by Lycopodium for use as an emergency backup in the event of a shortage resulting from the pandemic, is now in the testing phase on the ground in African hospitals, facilitated by our partnership with Australian Doctors for Africa
- We continue to support various charitable initiatives championed by our staff, including Jeans for Genes, for which we have raised more than \$380,000 since our partnership began back in the 1990's, and the St Vincent de Paul Society



# Major Projects

Current



# Bomboré Gold Project

Sector	Resources
Client	Orezone
Location	Burkina Faso
Commodity	Gold
Scope	Engineering, Procurement and Construction Management (EPCM) services
Processing Capacity	5.2 Mtpa



# Séguéla Gold Project

Sector	Resources
Client	Fortuna Silver Mines Inc
Location	Côte d'Ivoire
Commodity	Gold
Scope	Design, supply and project delivery services
Processing Capacity	1.25 Mtpa



# Cobré Ball Mill 6 Project

<b>Sector</b>	Resources
<b>Client</b>	First Quantum Minerals
<b>Location</b>	Panama
<b>Commodity</b>	Copper, Gold
<b>Scope</b>	Engineering Design, Procurement Support (Ep) and construction/commissioning support services
<b>Processing Capacity</b>	100 Mtpa



# Motheo Copper Project

Sector	Resources
Client	Sandfire Resources Ltd
Location	Botswana
Commodity	Copper, Silver
Scope	Engineering, Procurement and Construction Management (EPCM) services
Processing Capacity	3.2 Mtpa



# Chemical Grade Processing Plant #3 (CGP3)

Sector	Resources
Client	Talison Lithium
Location	Greenbushes, Western Australia
Commodity	Lithium
Scope	Engineering, Procurement and Construction Management (EPCM) services
Processing Capacity	2.4 Mtpa



Image: Chemical Grade Processing Plant #2 (CGP2), Greenbushes, Western Australia

# Mine Services Area Relocation

Sector	Resources
Client	Talison Lithium
Location	Greenbushes, Western Australia
Commodity	Lithium
Scope	Engineering, Procurement and Construction Management (EPCM) services





# Langer Heinrich Upgrade

Sector	Resources
Client	Paladin Energy
Location	Namibia
Commodity	Uranium
Scope	Engineering, Procurement and Construction Management (EPCM) services
Processing Capacity	5.5 Mtpa



# Batu Hijau Plant Expansion

Sector	Resources
Client	PT Amman Mineral Nusa Tenggara
Location	Indonesia
Commodity	Copper, Gold
Scope	Engineering services
Processing Capacity	60 Mtpa



# Navachab Gold Mine Expansion

Sector	Resources
Client	QKR Namibia Navachab Gold Mine Pty Ltd
Location	Namibia
Commodity	Gold
Scope	Engineering, Procurement and Construction Management (EPCM) services
Processing Capacity	2.5 Mtpa



# Lithium Hydroxide Plant 2 (LHP2) Recommencement

Sector	Resources
Client	Tianqi Lithium
Location	Kwinana, Western Australia
Commodity	Lithium
Scope	Professional services for the LHP2 Recommencement Project Phase 1, including project strategies and engineering
Processing Capacity	24,000 tpa



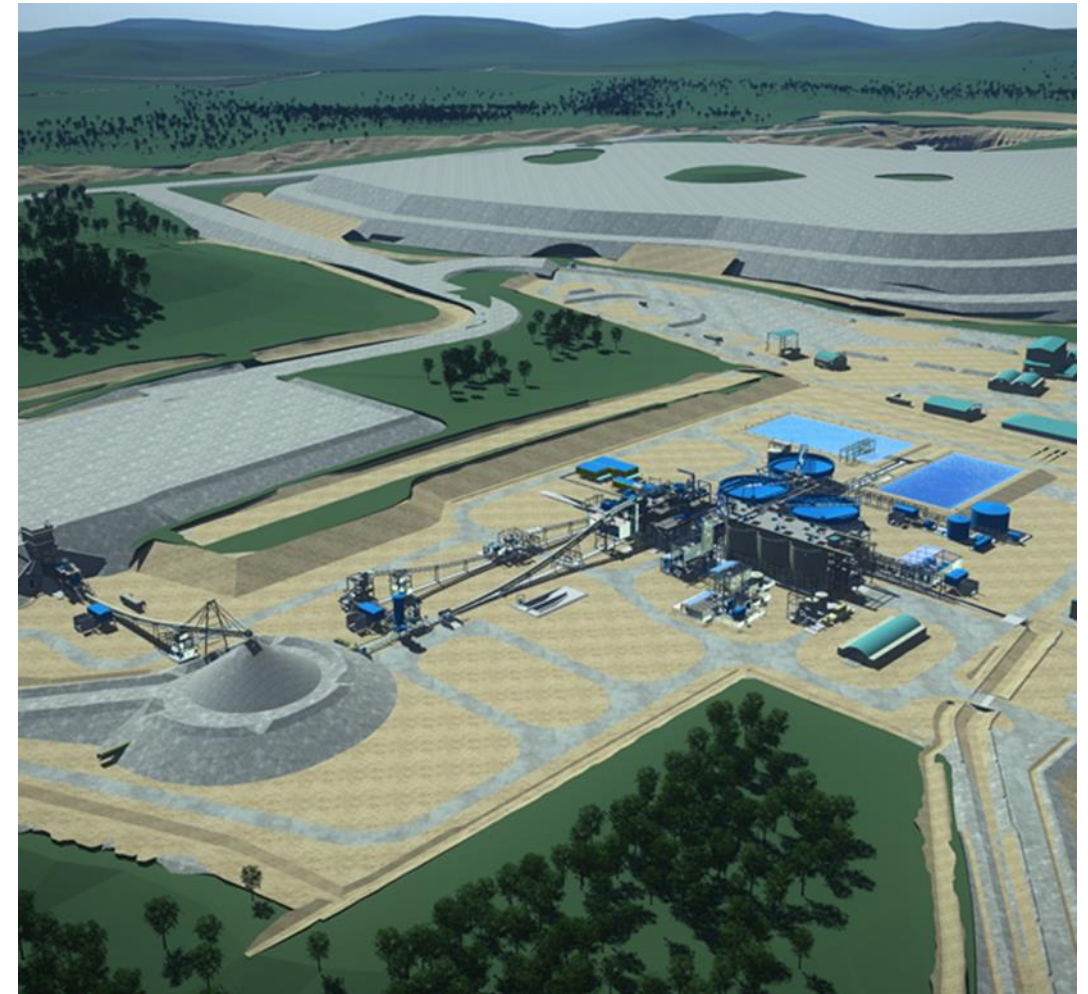
# Kathleen Valley Lithium Project

Sector	Resources
Client	Liontown Resources
Location	Western Australia
Commodity	Lithium
Scope	Engineering, Procurement and Construction Management (EPCM) services
Processing Capacity	2.5 Mtpa



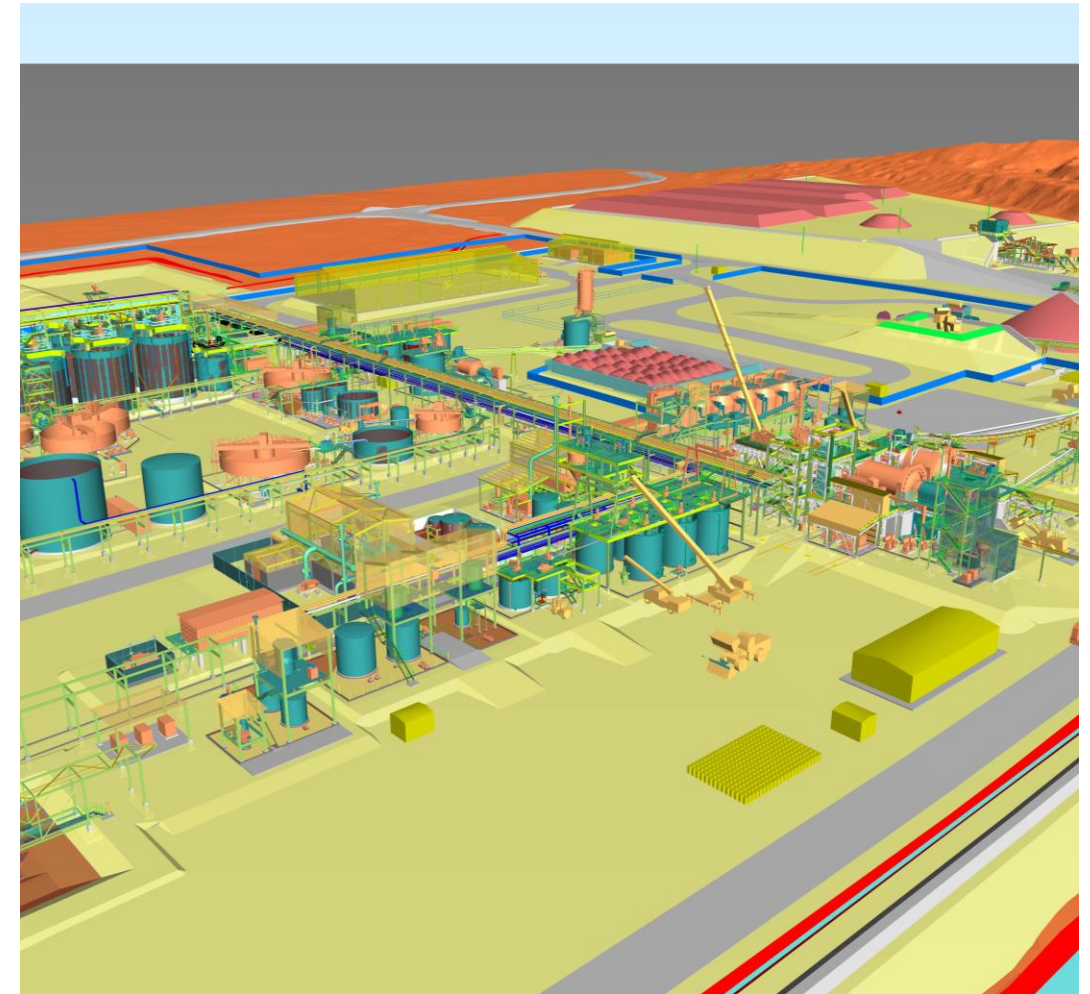
# Ahafo North Project

Sector	Resources
Client	Newmont Ghana Gold Limited
Location	Ghana
Commodity	Gold
Scope	Engineering, Procurement and Construction Management (EPCM) services
Processing Capacity	3.4 to 3.7 Mtpa



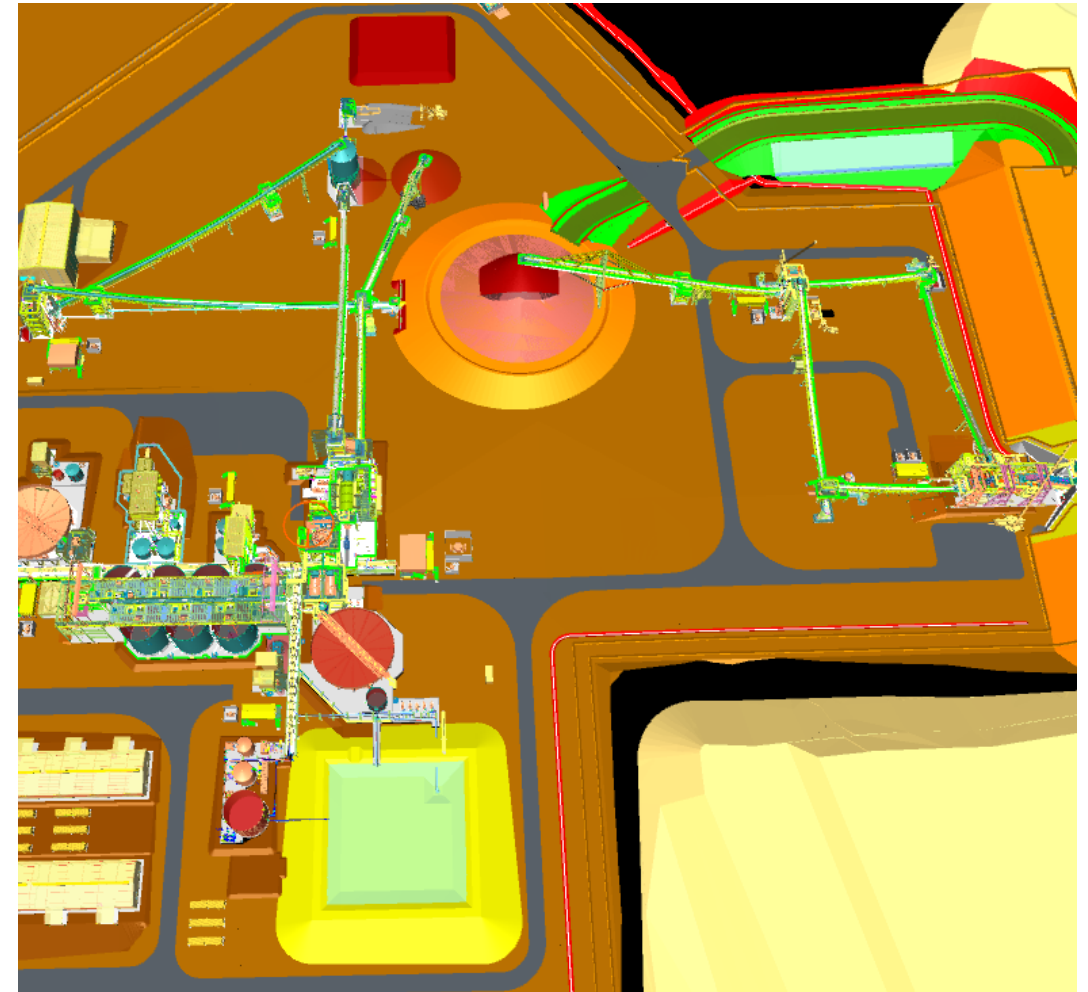
# Sabodala-Massawa BIOX<sup>®</sup> Expansion Project

Sector	Resources
Client	Sabodala Gold Operations SA (Endeavour Mining)
Location	Senegal
Commodity	Gold
Scope	Engineering and Procurement (EP) and associated Project Management (PM) services
Processing Capacity	1.2 Mtpa



# Lafigué Project

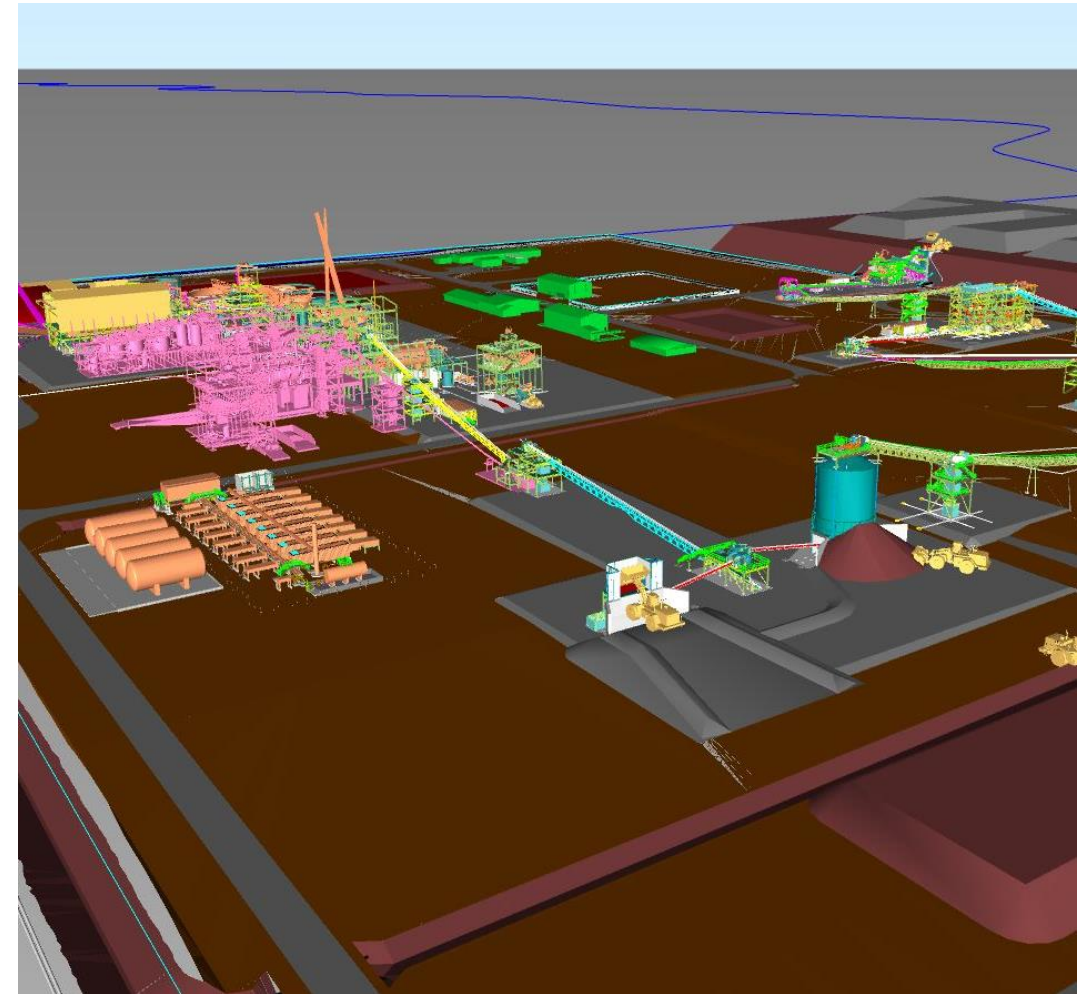
Sector	Resources
Client	Société Des Mines De Lafigué SA (Endeavour Mining)
Location	Côte d'Ivoire
Commodity	Gold
Scope	Engineering and Procurement (EP) and Construction Management (CM) services
Processing Capacity	4 Mtpa





# Goulamina Lithium Project

Sector	Resources
Client	Leo Lithium
Location	Mali
Commodity	Lithium
Scope	Engineering and Procurement (EP) and associated Project Management (PM) services
Processing Capacity	4.0 Mtpa



## Outlook

- Demand for base metals is expected to remain strong, in support of the energy transition
- Market for resources used in new and low emission technologies continuing to grow, including lithium, copper, nickel cobalt, graphite, vanadium and manganese
- Demand for gold continues to be buoyed by investment in 'safe' assets amid rising inflation and ongoing geopolitical uncertainty, and growing consumption in technology
- Development in emerging markets, including waste and recycling, water and wastewater and hydrogen continues
- Domestic manufacturing continues to present opportunities for the Industrial Processes sector
- Full year FY2023 guidance – revenue of approximately \$280 million and NPAT in the vicinity of \$30 million

## Strategy

- Continued focus on achieving broader geographical reach – across Asia-Pacific and the Americas
- Balanced project delivery portfolio – mix of EPCM and EPC
- People Plan – continue to attract, engage, inspire and retain a high performing, global, professional workforce
- Knowledge management – investment in systems to drive efficiency and facilitate work sharing across divisions and subsidiaries globally
- Innovation and emerging technology – digital twinning (ADP and Orway IQ) and engagement with industry (eg FBICRC and CSIRO)

Lycopodium

THANK YOU

